

COLUMBIA ROAD

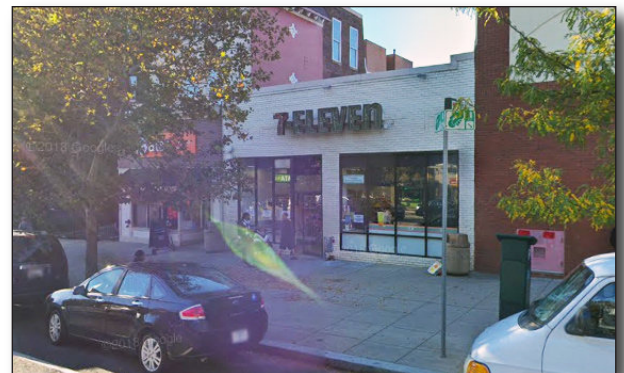
Washington, DC 20009



PROJECT FACTS

GLA: 5,500 SF

- ▶ Shops are adjacent to Safeway & CVS/pharmacy
- ▶ Located in Adams Morgan, the area is undergoing a rapid rebirth with several 'big box' stores opening in the neighborhood
- ▶ Less than 2 blocks from these retailers is the major conversion project of a century-old church to a trendy hotel named *The Line DC*.



2024 DEMOGRAPHICS

	Population	Avg HH Income	Households
1 mile	93,817	\$178,010	50,167
3 mile	386,683	\$177,145	187,356
5 mile	808,417	\$179,158	380,652

2024 ESRI



