

Demographic and Income Profile

40 West Plaza
6447 Baltimore National Pike, Catonsville, Maryland, 21228
Ring: 1 mile radius

Prepared by Esri
Latitude: 39.28501
Longitude: -76.76038

Summary	Census 2010	Census 2020	2024	2029
Population	13,365	14,045	13,996	13,871
Households	5,177	5,196	5,180	5,164
Families	3,459	3,556	3,456	3,430
Average Household Size	2.57	2.69	2.69	2.67
Owner Occupied Housing Units	4,071	4,011	4,117	4,220
Renter Occupied Housing Units	1,107	1,185	1,063	943
Median Age	42.8	41.8	42.0	43.0

Trends: 2024-2029 Annual Rate	Area	State	National
Population	-0.18%	0.21%	0.38%
Households	-0.06%	0.45%	0.64%
Families	-0.15%	0.35%	0.56%
Owner HHs	0.50%	0.94%	0.97%
Median Household Income	1.80%	1.95%	2.95%

Households by Income	2024		2029	
	Number	Percent	Number	Percent
<\$15,000	252	4.9%	239	4.6%
\$15,000 - \$24,999	242	4.7%	205	4.0%
\$25,000 - \$34,999	213	4.1%	177	3.4%
\$35,000 - \$49,999	316	6.1%	260	5.0%
\$50,000 - \$74,999	658	12.7%	556	10.8%
\$75,000 - \$99,999	747	14.4%	686	13.3%
\$100,000 - \$149,999	1,226	23.7%	1,210	23.4%
\$150,000 - \$199,999	689	13.3%	766	14.8%
\$200,000+	836	16.1%	1,064	20.6%

Median Household Income	\$104,246	\$113,952
Average Household Income	\$131,972	\$152,038
Per Capita Income	\$49,326	\$57,158

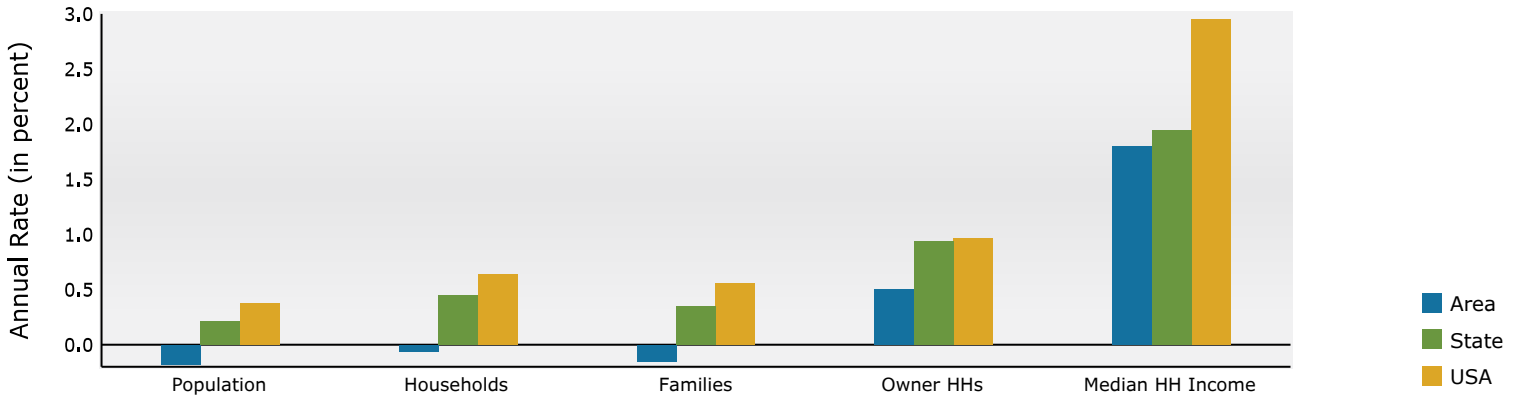
Population by Age	Census 2010		Census 2020		2024		2029	
	Number	Percent	Number	Percent	Number	Percent	Number	Percent
0 - 4	758	5.7%	781	5.6%	767	5.5%	748	5.4%
5 - 9	767	5.7%	852	6.1%	839	6.0%	765	5.5%
10 - 14	819	6.1%	884	6.3%	835	6.0%	838	6.0%
15 - 19	842	6.3%	773	5.5%	767	5.5%	741	5.3%
20 - 24	711	5.3%	705	5.0%	724	5.2%	696	5.0%
25 - 34	1,521	11.4%	1,825	13.0%	1,721	12.3%	1,611	11.6%
35 - 44	1,683	12.6%	1,766	12.6%	1,905	13.6%	1,926	13.9%
45 - 54	2,180	16.3%	1,691	12.0%	1,675	12.0%	1,728	12.5%
55 - 64	1,913	14.3%	2,103	15.0%	1,846	13.2%	1,576	11.4%
65 - 74	1,100	8.2%	1,600	11.4%	1,701	12.2%	1,783	12.9%
75 - 84	781	5.8%	777	5.5%	907	6.5%	1,083	7.8%
85+	292	2.2%	287	2.0%	307	2.2%	377	2.7%

Race and Ethnicity	Census 2010		Census 2020		2024		2029	
	Number	Percent	Number	Percent	Number	Percent	Number	Percent
White Alone	7,799	58.3%	7,038	50.1%	6,682	47.7%	6,306	45.5%
Black Alone	3,466	25.9%	3,048	21.7%	3,176	22.7%	3,225	23.2%
American Indian Alone	32	0.2%	63	0.4%	73	0.5%	74	0.5%
Asian Alone	1,347	10.1%	2,414	17.2%	2,483	17.7%	2,612	18.8%
Pacific Islander Alone	10	0.1%	8	0.1%	8	0.1%	8	0.1%
Some Other Race Alone	342	2.6%	536	3.8%	583	4.2%	612	4.4%
Two or More Races	370	2.8%	938	6.7%	991	7.1%	1,034	7.5%
Hispanic Origin (Any Race)	722	5.4%	994	7.1%	1,085	7.8%	1,141	8.2%

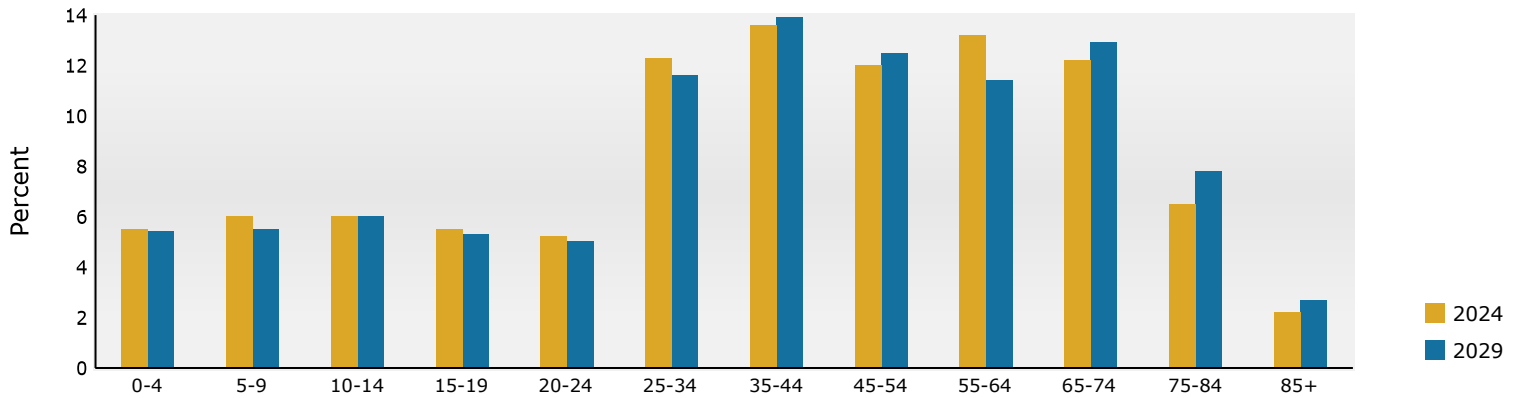
Data Note: Income is expressed in current dollars.

Source: Esri forecasts for 2024 and 2029. U.S. Census Bureau 2020 decennial Census in 2020 geographies.

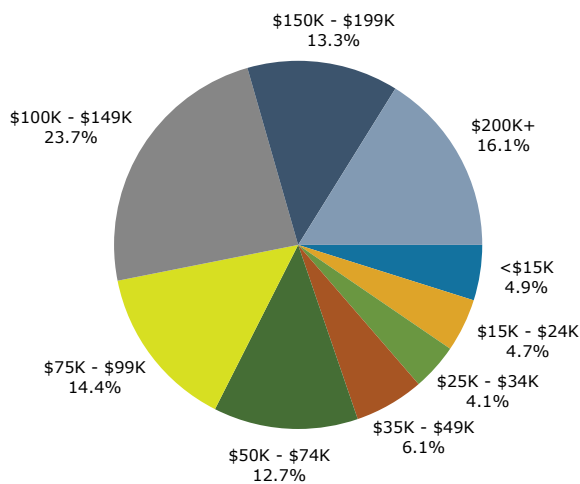
Trends 2024-2029



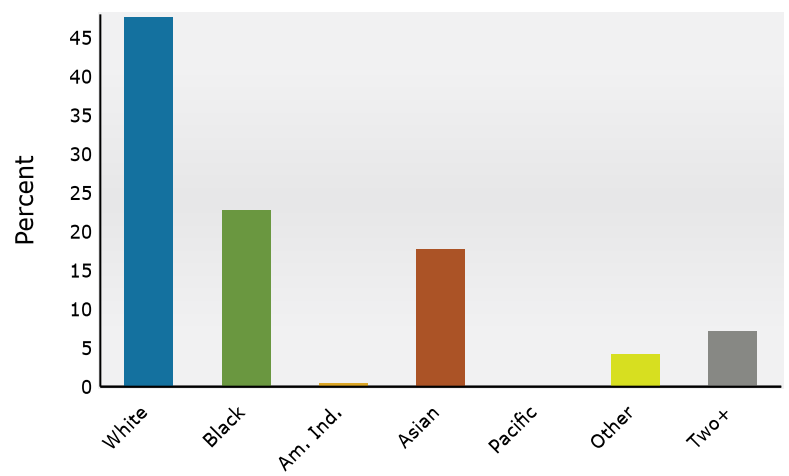
Population by Age



2024 Household Income



2024 Population by Race



2024 Percent Hispanic Origin: 7.8%

Source: Esri forecasts for 2024 and 2029. U.S. Census Bureau 2020 decennial Census in 2020 geographies.

Demographic and Income Profile

40 West Plaza
6447 Baltimore National Pike, Catonsville, Maryland, 21228
Ring: 3 mile radius

Prepared by Esri
Latitude: 39.28501
Longitude: -76.76038

Summary	Census 2010	Census 2020	2024	2029
Population	89,688	96,546	96,927	96,139
Households	34,972	36,522	36,755	36,734
Families	22,451	24,080	23,621	23,509
Average Household Size	2.52	2.60	2.60	2.58
Owner Occupied Housing Units	22,427	22,515	23,638	24,474
Renter Occupied Housing Units	12,545	14,007	13,117	12,261
Median Age	37.8	38.2	38.9	40.2

Trends: 2024-2029 Annual Rate	Area	State	National
Population	-0.16%	0.21%	0.38%
Households	-0.01%	0.45%	0.64%
Families	-0.10%	0.35%	0.56%
Owner HHs	0.70%	0.94%	0.97%
Median Household Income	2.40%	1.95%	2.95%

Households by Income	2024		2029	
	Number	Percent	Number	Percent
<\$15,000	2,331	6.3%	2,154	5.9%
\$15,000 - \$24,999	1,529	4.2%	1,200	3.3%
\$25,000 - \$34,999	1,805	4.9%	1,515	4.1%
\$35,000 - \$49,999	3,597	9.8%	3,034	8.3%
\$50,000 - \$74,999	5,681	15.5%	5,077	13.8%
\$75,000 - \$99,999	4,863	13.2%	4,799	13.1%
\$100,000 - \$149,999	7,105	19.3%	7,260	19.8%
\$150,000 - \$199,999	4,174	11.4%	4,694	12.8%
\$200,000+	5,662	15.4%	6,994	19.0%

Median Household Income	\$91,162	\$102,664
Average Household Income	\$128,032	\$147,172
Per Capita Income	\$48,627	\$56,311

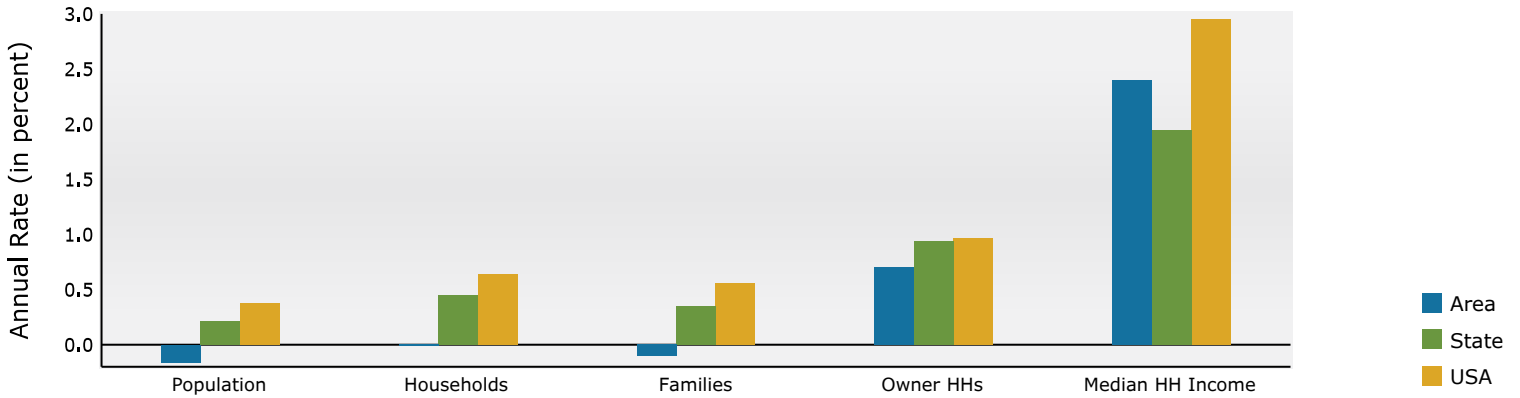
Population by Age	Census 2010		Census 2020		2024		2029	
	Number	Percent	Number	Percent	Number	Percent	Number	Percent
0 - 4	5,712	6.4%	5,817	6.0%	5,745	5.9%	5,497	5.7%
5 - 9	5,697	6.4%	6,352	6.6%	6,109	6.3%	5,609	5.8%
10 - 14	5,768	6.4%	6,499	6.7%	6,065	6.3%	5,952	6.2%
15 - 19	5,840	6.5%	5,891	6.1%	5,862	6.0%	5,680	5.9%
20 - 24	5,749	6.4%	5,640	5.8%	5,948	6.1%	5,712	5.9%
25 - 34	12,569	14.0%	13,528	14.0%	13,151	13.6%	12,426	12.9%
35 - 44	12,763	14.2%	13,377	13.9%	14,224	14.7%	13,919	14.5%
45 - 54	14,021	15.6%	12,104	12.5%	12,005	12.4%	12,366	12.9%
55 - 64	10,964	12.2%	12,623	13.1%	11,748	12.1%	10,868	11.3%
65 - 74	5,566	6.2%	9,202	9.5%	9,574	9.9%	10,124	10.5%
75 - 84	3,523	3.9%	3,966	4.1%	4,867	5.0%	6,056	6.3%
85+	1,515	1.7%	1,549	1.6%	1,630	1.7%	1,931	2.0%

Race and Ethnicity	Census 2010		Census 2020		2024		2029	
	Number	Percent	Number	Percent	Number	Percent	Number	Percent
White Alone	41,052	45.8%	36,596	37.9%	34,782	35.9%	32,847	34.2%
Black Alone	34,466	38.4%	34,303	35.5%	35,255	36.4%	35,252	36.7%
American Indian Alone	287	0.3%	352	0.4%	389	0.4%	386	0.4%
Asian Alone	9,584	10.7%	15,675	16.2%	16,331	16.8%	17,132	17.8%
Pacific Islander Alone	38	0.0%	30	0.0%	31	0.0%	31	0.0%
Some Other Race Alone	1,845	2.1%	3,813	3.9%	4,078	4.2%	4,210	4.4%
Two or More Races	2,416	2.7%	5,776	6.0%	6,061	6.3%	6,280	6.5%
Hispanic Origin (Any Race)	4,167	4.6%	6,581	6.8%	7,079	7.3%	7,367	7.7%

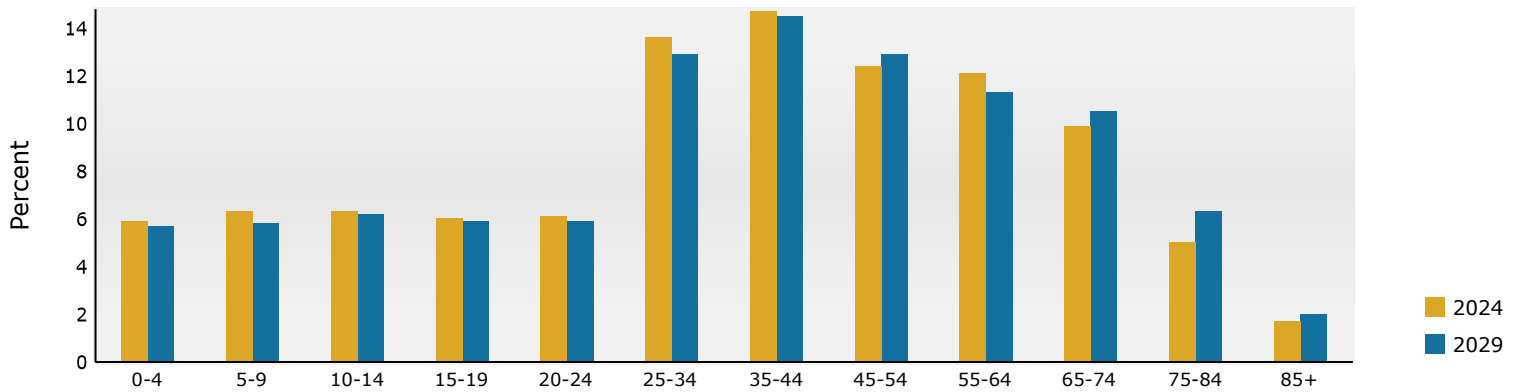
Data Note: Income is expressed in current dollars.

Source: Esri forecasts for 2024 and 2029. U.S. Census Bureau 2020 decennial Census in 2020 geographies.

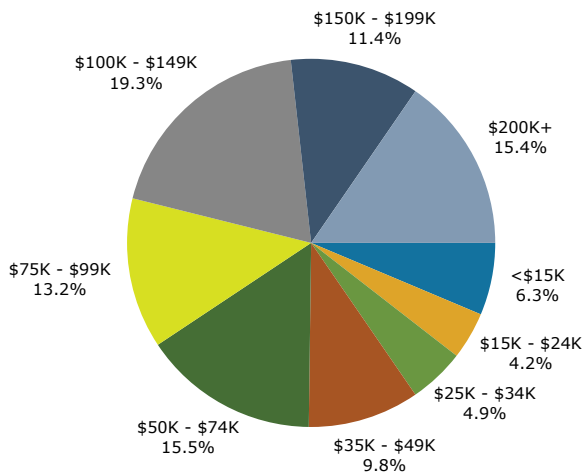
Trends 2024-2029



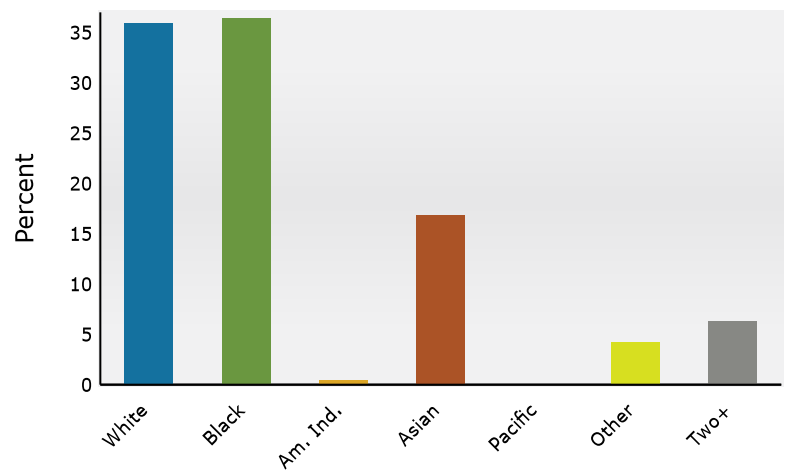
Population by Age



2024 Household Income



2024 Population by Race



2024 Percent Hispanic Origin: 7.3%

Source: Esri forecasts for 2024 and 2029. U.S. Census Bureau 2020 decennial Census in 2020 geographies.

Demographic and Income Profile

40 West Plaza
6447 Baltimore National Pike, Catonsville, Maryland, 21228
Ring: 5 mile radius

Prepared by Esri
Latitude: 39.28501
Longitude: -76.76038

Summary	Census 2010	Census 2020	2024	2029
Population	251,430	261,312	259,884	257,183
Households	96,080	99,146	99,038	99,009
Families	62,860	64,731	63,141	62,936
Average Household Size	2.54	2.56	2.55	2.53
Owner Occupied Housing Units	60,453	60,365	62,871	65,208
Renter Occupied Housing Units	35,627	38,781	36,167	33,800
Median Age	38.1	38.9	39.7	41.0

Trends: 2024-2029 Annual Rate	Area	State	National
Population	-0.21%	0.21%	0.38%
Households	-0.01%	0.45%	0.64%
Families	-0.07%	0.35%	0.56%
Owner HHs	0.73%	0.94%	0.97%
Median Household Income	2.62%	1.95%	2.95%

Households by Income	2024		2029	
	Number	Percent	Number	Percent
<\$15,000	8,303	8.4%	7,768	7.8%
\$15,000 - \$24,999	5,399	5.5%	4,446	4.5%
\$25,000 - \$34,999	5,885	5.9%	5,105	5.2%
\$35,000 - \$49,999	10,428	10.5%	8,936	9.0%
\$50,000 - \$74,999	14,473	14.6%	12,953	13.1%
\$75,000 - \$99,999	12,069	12.2%	12,087	12.2%
\$100,000 - \$149,999	16,093	16.3%	16,556	16.7%
\$150,000 - \$199,999	10,694	10.8%	12,061	12.2%
\$200,000+	15,686	15.8%	19,090	19.3%

Median Household Income	\$83,823	\$95,406
Average Household Income	\$125,568	\$144,263
Per Capita Income	\$47,975	\$55,662

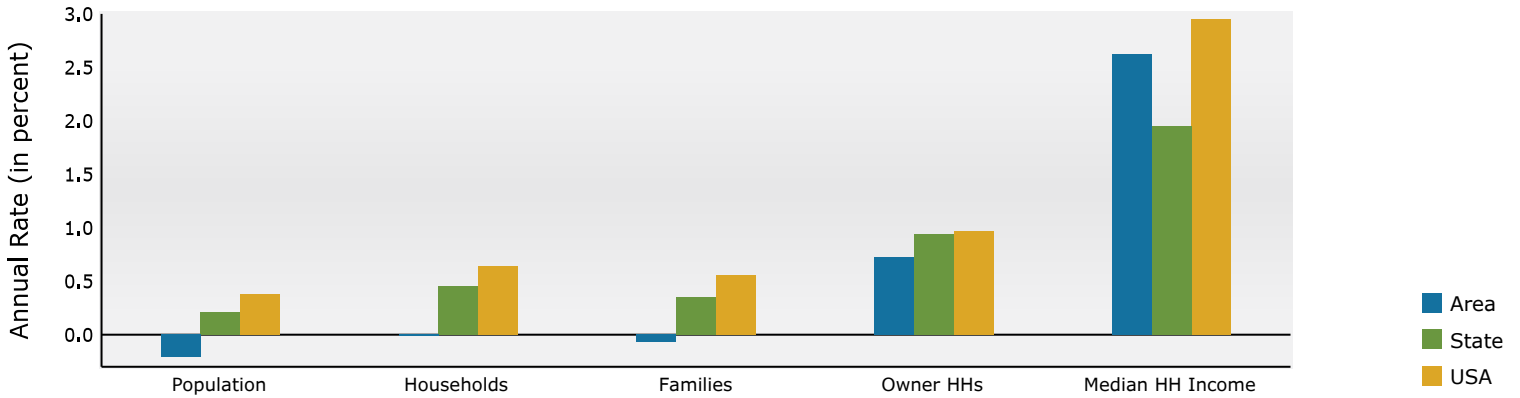
Population by Age	Census 2010		Census 2020		2024		2029	
	Number	Percent	Number	Percent	Number	Percent	Number	Percent
0 - 4	15,620	6.2%	14,592	5.6%	14,290	5.5%	13,607	5.3%
5 - 9	15,782	6.3%	16,438	6.3%	15,552	6.0%	14,183	5.5%
10 - 14	16,645	6.6%	17,036	6.5%	16,086	6.2%	15,443	6.0%
15 - 19	18,496	7.4%	17,471	6.7%	17,065	6.6%	16,627	6.5%
20 - 24	17,612	7.0%	17,250	6.6%	17,160	6.6%	16,251	6.3%
25 - 34	31,817	12.7%	33,891	13.0%	33,122	12.7%	31,541	12.3%
35 - 44	33,231	13.2%	33,769	12.9%	35,768	13.8%	34,897	13.6%
45 - 54	38,966	15.5%	32,127	12.3%	31,535	12.1%	32,470	12.6%
55 - 64	30,222	12.0%	34,988	13.4%	32,322	12.4%	29,547	11.5%
65 - 74	16,185	6.4%	25,189	9.6%	26,348	10.1%	28,200	11.0%
75 - 84	11,215	4.5%	12,466	4.8%	14,404	5.5%	17,541	6.8%
85+	5,638	2.2%	6,095	2.3%	6,231	2.4%	6,876	2.7%

Race and Ethnicity	Census 2010		Census 2020		2024		2029	
	Number	Percent	Number	Percent	Number	Percent	Number	Percent
White Alone	98,688	39.3%	87,513	33.5%	83,563	32.2%	79,318	30.8%
Black Alone	122,157	48.6%	118,275	45.3%	117,791	45.3%	116,334	45.2%
American Indian Alone	688	0.3%	787	0.3%	860	0.3%	855	0.3%
Asian Alone	20,544	8.2%	32,730	12.5%	34,600	13.3%	36,836	14.3%
Pacific Islander Alone	110	0.0%	73	0.0%	74	0.0%	76	0.0%
Some Other Race Alone	3,277	1.3%	7,275	2.8%	7,717	3.0%	7,947	3.1%
Two or More Races	5,965	2.4%	14,660	5.6%	15,279	5.9%	15,816	6.1%
Hispanic Origin (Any Race)	8,503	3.4%	13,748	5.3%	14,737	5.7%	15,341	6.0%

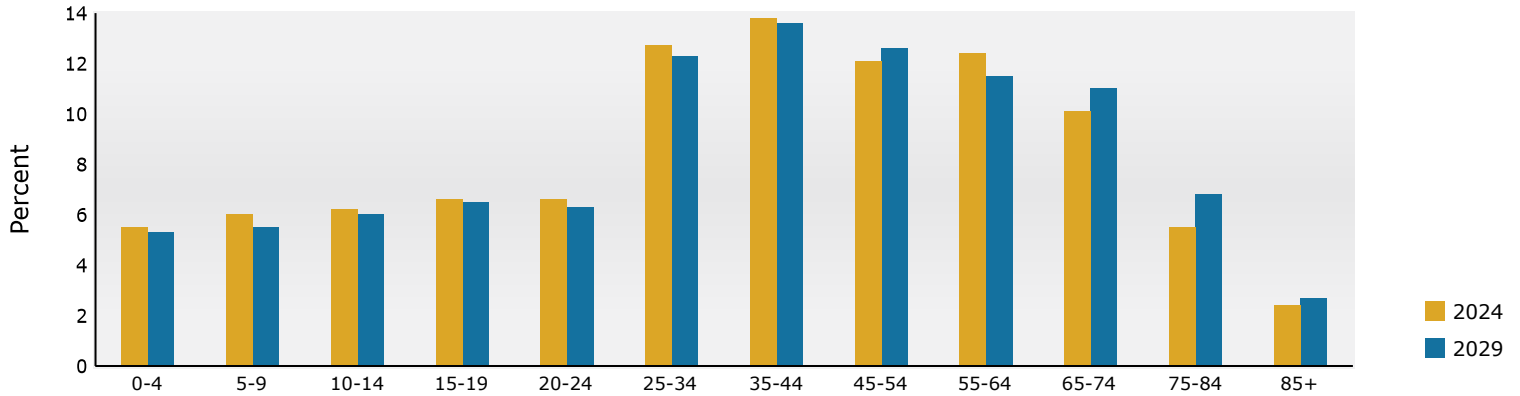
Data Note: Income is expressed in current dollars.

Source: Esri forecasts for 2024 and 2029. U.S. Census Bureau 2020 decennial Census in 2020 geographies.

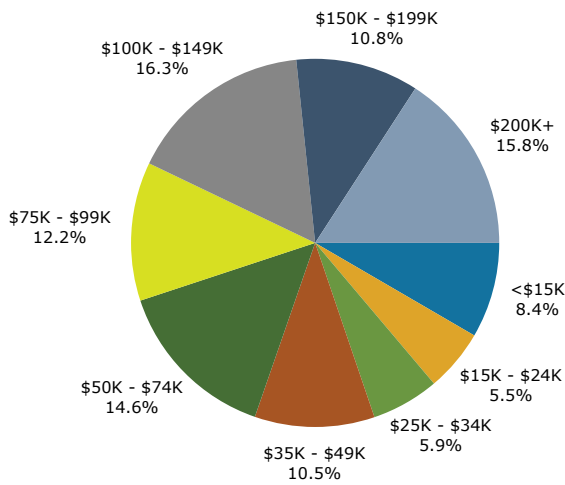
Trends 2024-2029



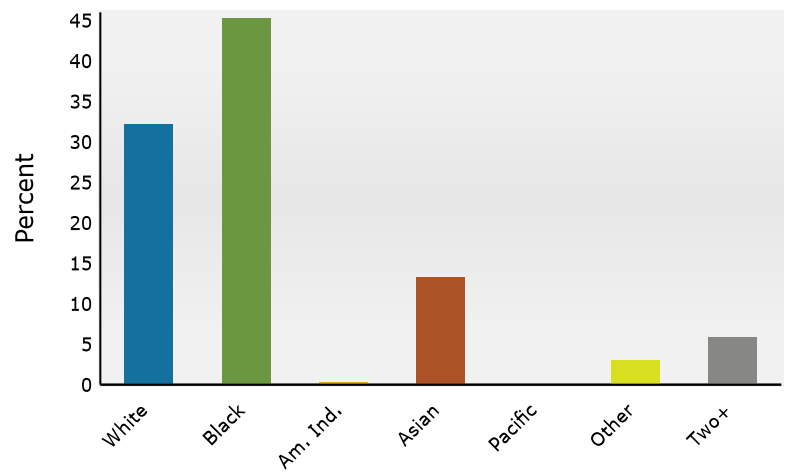
Population by Age



2024 Household Income



2024 Population by Race



2024 Percent Hispanic Origin: 5.7%

Source: Esri forecasts for 2024 and 2029. U.S. Census Bureau 2020 decennial Census in 2020 geographies.