

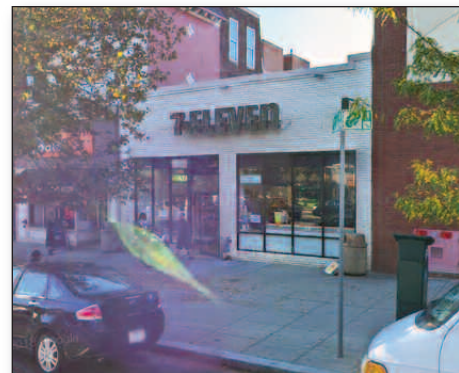
COLUMBIA ROAD Washington, DC 20009



PROJECT FACTS

GLA: 5,500 SF

- ▶ Shops are adjacent to Safeway & CVS/pharmacy
- ▶ Located in Adams Morgan, the area is undergoing a rapid rebirth with several 'big box' stores opening in the neighborhood
- ▶ Less than 2 blocks from these retailers is the major conversion project of a century-old church to a trendy hotel named *The Line DC*.



2020 DEMOGRAPHICS

	Population	Avg HH Income	Households
1 mile	97,384	\$150,633	49,967
3 mile	398,288	\$148,751	185,858
5 mile	797,937	\$151,029	368,741

2020 ESRI



