

Demographic and Income Profile

Scout On The Circle
9444 Arlington Blvd, Fairfax, Virginia, 22031
Ring: 1 mile radius

Prepared by Esri
Latitude: 38.86503
Longitude: -77.27066

Summary	Census 2010	Census 2020	2024	2029
Population	17,533	19,436	20,248	20,486
Households	6,785	7,388	7,752	7,842
Families	4,241	4,961	5,070	5,110
Average Household Size	2.58	2.63	2.61	2.61
Owner Occupied Housing Units	3,669	4,005	4,317	4,517
Renter Occupied Housing Units	3,116	3,383	3,435	3,324
Median Age	34.7	36.2	36.9	38.6

Trends: 2024-2029 Annual Rate	Area	State	National
Population	0.23%	0.37%	0.38%
Households	0.23%	0.56%	0.64%
Families	0.16%	0.46%	0.56%
Owner HHs	0.91%	0.95%	0.97%
Median Household Income	2.45%	2.80%	2.95%

Households by Income	2024		2029	
	Number	Percent	Number	Percent
<\$15,000	389	5.0%	324	4.1%
\$15,000 - \$24,999	135	1.7%	101	1.3%
\$25,000 - \$34,999	247	3.2%	197	2.5%
\$35,000 - \$49,999	479	6.2%	391	5.0%
\$50,000 - \$74,999	744	9.6%	639	8.1%
\$75,000 - \$99,999	759	9.8%	646	8.2%
\$100,000 - \$149,999	1,176	15.2%	1,152	14.7%
\$150,000 - \$199,999	1,075	13.9%	1,225	15.6%
\$200,000+	2,747	35.4%	3,167	40.4%

Median Household Income	\$146,881	\$165,742
Average Household Income	\$197,722	\$224,016
Per Capita Income	\$74,265	\$84,152

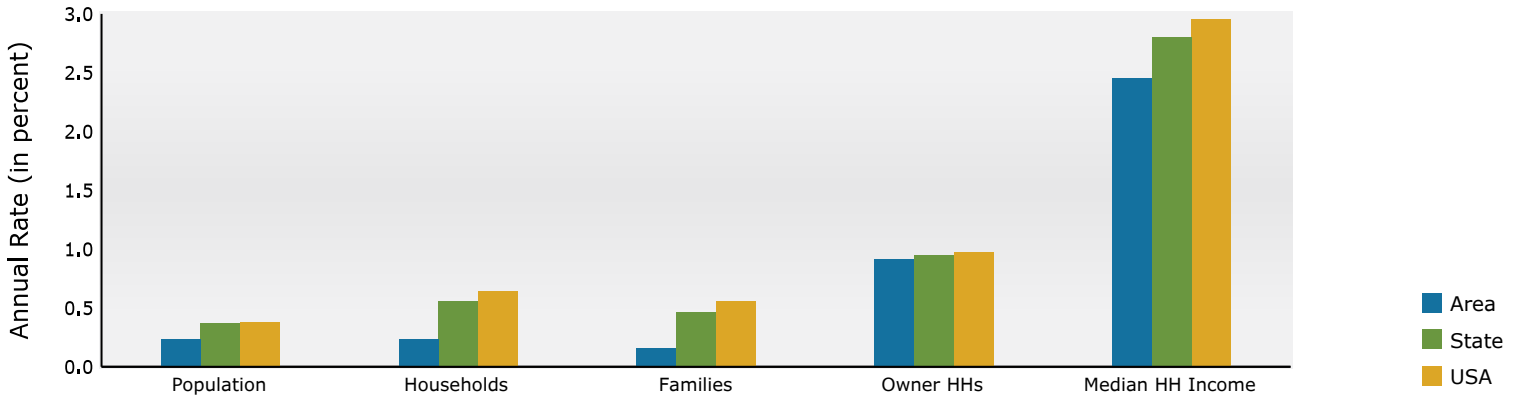
Population by Age	Census 2010		Census 2020		2024		2029	
	Number	Percent	Number	Percent	Number	Percent	Number	Percent
0 - 4	1,120	6.4%	1,246	6.4%	1,259	6.2%	1,189	5.8%
5 - 9	972	5.5%	1,186	6.1%	1,318	6.5%	1,238	6.0%
10 - 14	887	5.1%	1,089	5.6%	1,121	5.5%	1,331	6.5%
15 - 19	838	4.8%	1,024	5.3%	966	4.8%	1,072	5.2%
20 - 24	1,472	8.4%	1,287	6.6%	1,195	5.9%	1,110	5.4%
25 - 34	3,563	20.3%	3,473	17.9%	3,589	17.7%	2,981	14.6%
35 - 44	2,530	14.4%	3,093	15.9%	3,515	17.4%	3,599	17.6%
45 - 54	2,405	13.7%	2,380	12.2%	2,562	12.7%	2,848	13.9%
55 - 64	1,939	11.1%	2,168	11.2%	2,020	10.0%	2,079	10.1%
65 - 74	989	5.6%	1,468	7.6%	1,551	7.7%	1,657	8.1%
75 - 84	544	3.1%	683	3.5%	805	4.0%	1,014	4.9%
85+	274	1.6%	338	1.7%	347	1.7%	367	1.8%

Race and Ethnicity	Census 2010		Census 2020		2024		2029	
	Number	Percent	Number	Percent	Number	Percent	Number	Percent
White Alone	9,840	56.1%	8,671	44.6%	8,696	42.9%	8,306	40.5%
Black Alone	1,188	6.8%	1,361	7.0%	1,417	7.0%	1,412	6.9%
American Indian Alone	65	0.4%	71	0.4%	77	0.4%	76	0.4%
Asian Alone	4,828	27.5%	5,919	30.5%	6,337	31.3%	6,801	33.2%
Pacific Islander Alone	8	0.0%	12	0.1%	12	0.1%	12	0.1%
Some Other Race Alone	871	5.0%	1,190	6.1%	1,284	6.3%	1,340	6.5%
Two or More Races	733	4.2%	2,212	11.4%	2,425	12.0%	2,539	12.4%
Hispanic Origin (Any Race)	2,674	15.3%	2,770	14.3%	2,990	14.8%	3,123	15.2%

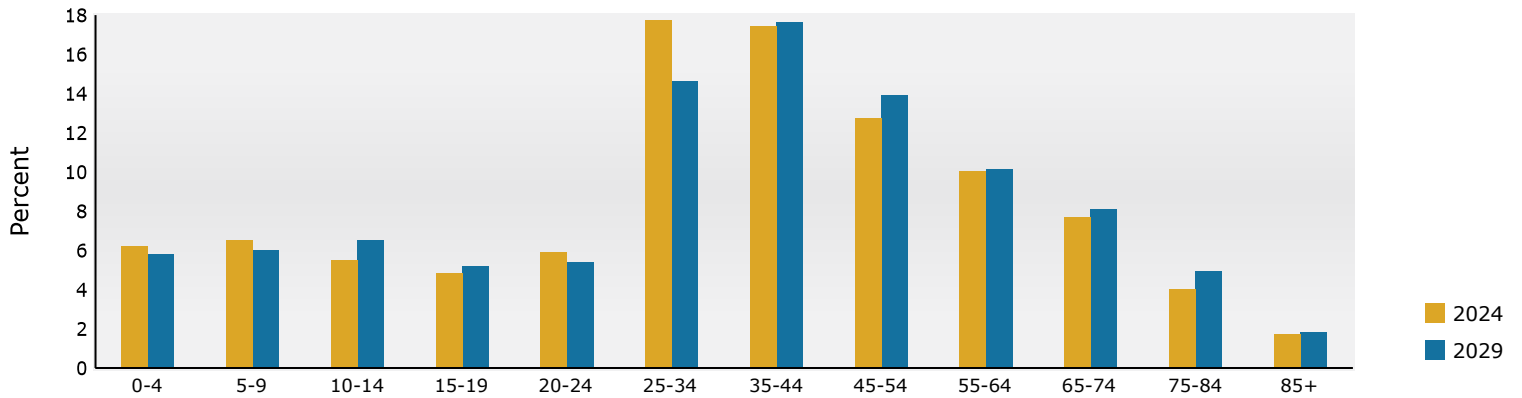
Data Note: Income is expressed in current dollars.

Source: Esri forecasts for 2024 and 2029. U.S. Census Bureau 2020 decennial Census in 2020 geographies.

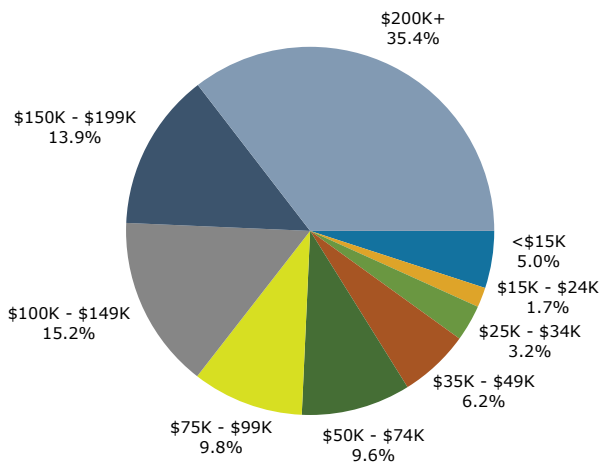
Trends 2024-2029



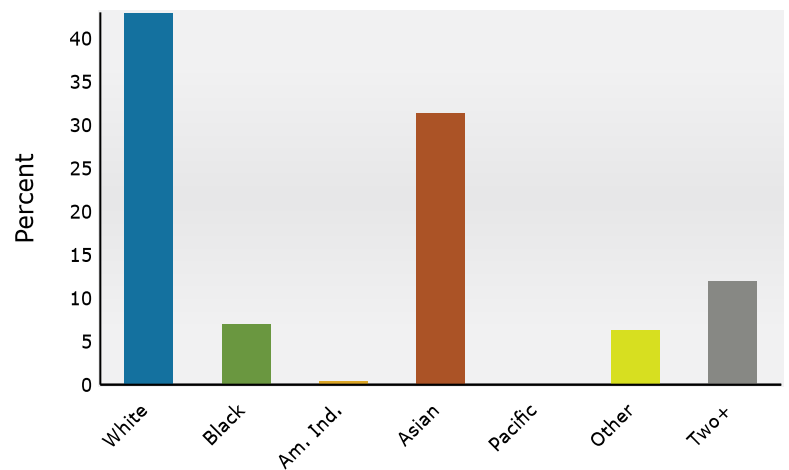
Population by Age



2024 Household Income



2024 Population by Race



2024 Percent Hispanic Origin: 14.8%

Source: Esri forecasts for 2024 and 2029. U.S. Census Bureau 2020 decennial Census in 2020 geographies.

Demographic and Income Profile

Scout On The Circle
9444 Arlington Blvd, Fairfax, Virginia, 22031
Ring: 3 mile radius

Prepared by Esri
Latitude: 38.86503
Longitude: -77.27066

Summary	Census 2010	Census 2020	2024	2029
Population	113,012	123,762	123,273	123,563
Households	41,589	45,631	45,406	45,533
Families	28,653	31,477	30,697	30,717
Average Household Size	2.65	2.67	2.67	2.67
Owner Occupied Housing Units	28,258	28,674	29,456	30,152
Renter Occupied Housing Units	13,330	16,957	15,950	15,380
Median Age	37.9	37.8	38.3	39.7

Trends: 2024-2029 Annual Rate	Area	State	National
Population	0.05%	0.37%	0.38%
Households	0.06%	0.56%	0.64%
Families	0.01%	0.46%	0.56%
Owner HHs	0.47%	0.95%	0.97%
Median Household Income	1.91%	2.80%	2.95%

Households by Income	2024		2029	
	Number	Percent	Number	Percent
<\$15,000	1,824	4.0%	1,525	3.3%
\$15,000 - \$24,999	1,016	2.2%	738	1.6%
\$25,000 - \$34,999	1,064	2.3%	799	1.8%
\$35,000 - \$49,999	1,947	4.3%	1,508	3.3%
\$50,000 - \$74,999	3,466	7.6%	2,832	6.2%
\$75,000 - \$99,999	4,170	9.2%	3,510	7.7%
\$100,000 - \$149,999	7,072	15.6%	6,928	15.2%
\$150,000 - \$199,999	7,049	15.5%	7,714	16.9%
\$200,000+	17,795	39.2%	19,976	43.9%

Median Household Income	\$162,128	\$178,248
Average Household Income	\$218,656	\$244,973
Per Capita Income	\$80,335	\$90,038

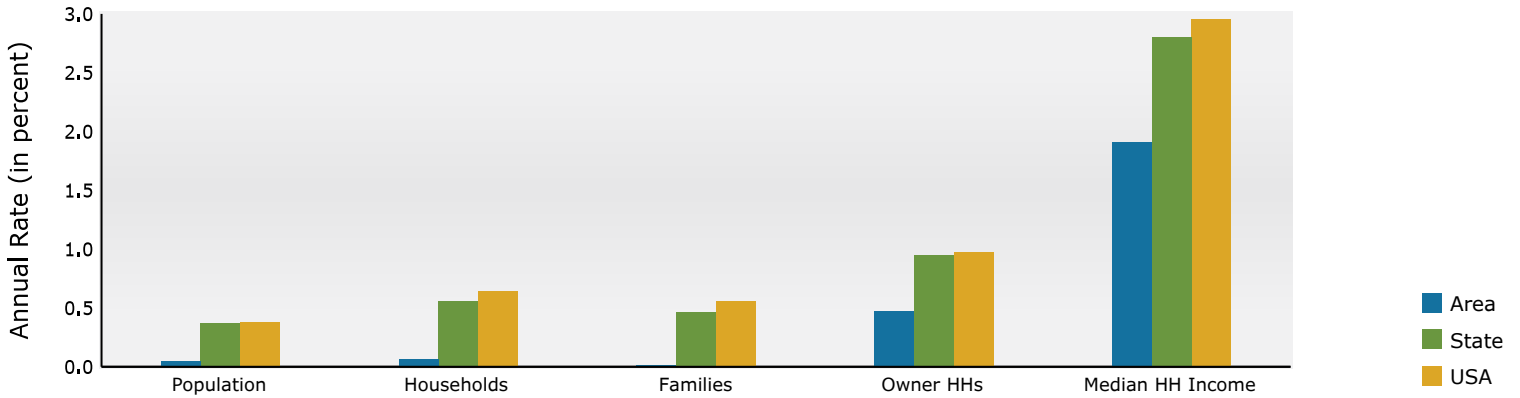
Population by Age	Census 2010		Census 2020		2024		2029	
	Number	Percent	Number	Percent	Number	Percent	Number	Percent
0 - 4	6,719	5.9%	6,824	5.5%	6,665	5.4%	6,299	5.1%
5 - 9	7,026	6.2%	7,454	6.0%	7,611	6.2%	6,988	5.7%
10 - 14	6,933	6.1%	7,879	6.4%	7,308	5.9%	7,924	6.4%
15 - 19	6,660	5.9%	7,742	6.3%	7,064	5.7%	7,060	5.7%
20 - 24	7,289	6.4%	8,115	6.6%	7,610	6.2%	6,892	5.6%
25 - 34	17,297	15.3%	18,669	15.1%	19,191	15.6%	17,466	14.1%
35 - 44	16,305	14.4%	17,872	14.4%	19,036	15.4%	18,974	15.4%
45 - 54	17,715	15.7%	16,405	13.3%	16,624	13.5%	17,479	14.1%
55 - 64	13,805	12.2%	15,160	12.2%	13,891	11.3%	13,946	11.3%
65 - 74	7,361	6.5%	10,318	8.3%	10,289	8.3%	11,095	9.0%
75 - 84	4,159	3.7%	5,177	4.2%	5,766	4.7%	6,926	5.6%
85+	1,744	1.5%	2,147	1.7%	2,216	1.8%	2,514	2.0%

Race and Ethnicity	Census 2010		Census 2020		2024		2029	
	Number	Percent	Number	Percent	Number	Percent	Number	Percent
White Alone	75,064	66.4%	66,903	54.1%	64,005	51.9%	61,083	49.4%
Black Alone	5,659	5.0%	6,610	5.3%	6,767	5.5%	6,775	5.5%
American Indian Alone	451	0.4%	445	0.4%	471	0.4%	477	0.4%
Asian Alone	22,570	20.0%	28,504	23.0%	29,548	24.0%	31,617	25.6%
Pacific Islander Alone	51	0.0%	67	0.1%	72	0.1%	73	0.1%
Some Other Race Alone	4,904	4.3%	7,434	6.0%	7,810	6.3%	8,200	6.6%
Two or More Races	4,313	3.8%	13,799	11.1%	14,601	11.8%	15,337	12.4%
Hispanic Origin (Any Race)	14,307	12.7%	16,842	13.6%	17,609	14.3%	18,496	15.0%

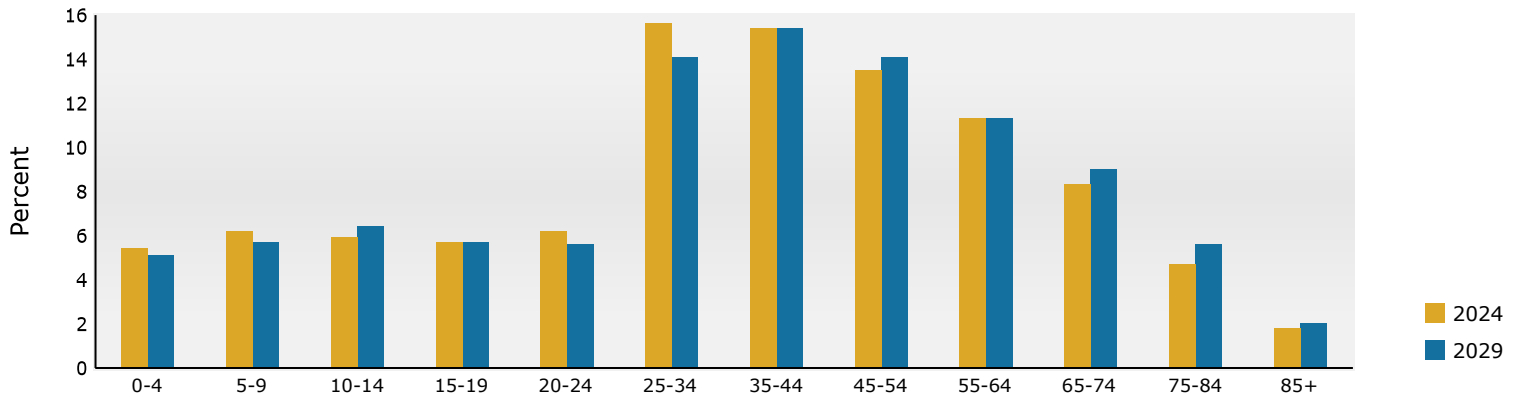
Data Note: Income is expressed in current dollars.

Source: Esri forecasts for 2024 and 2029. U.S. Census Bureau 2020 decennial Census in 2020 geographies.

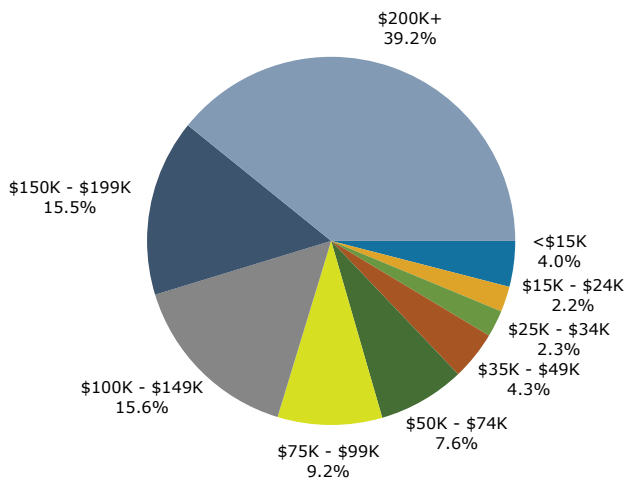
Trends 2024-2029



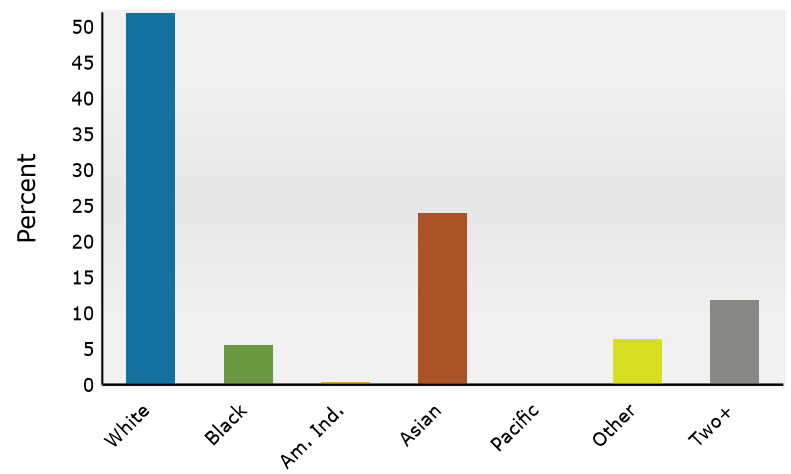
Population by Age



2024 Household Income



2024 Population by Race



2024 Percent Hispanic Origin: 14.3%

Source: Esri forecasts for 2024 and 2029. U.S. Census Bureau 2020 decennial Census in 2020 geographies.

Demographic and Income Profile

Scout On The Circle
9444 Arlington Blvd, Fairfax, Virginia, 22031
Ring: 5 mile radius

Prepared by Esri
Latitude: 38.86503
Longitude: -77.27066

Summary	Census 2010	Census 2020	2024	2029
Population	302,196	328,170	329,508	333,068
Households	109,143	116,957	117,289	118,611
Families	76,054	82,115	80,454	80,945
Average Household Size	2.70	2.74	2.74	2.74
Owner Occupied Housing Units	74,433	74,229	76,329	77,933
Renter Occupied Housing Units	34,710	42,728	40,960	40,678
Median Age	37.2	37.5	38.1	39.4

Trends: 2024-2029 Annual Rate	Area	State	National
Population	0.22%	0.37%	0.38%
Households	0.22%	0.56%	0.64%
Families	0.12%	0.46%	0.56%
Owner HHs	0.42%	0.95%	0.97%
Median Household Income	1.90%	2.80%	2.95%

Households by Income	2024		2029	
	Number	Percent	Number	Percent
<\$15,000	4,519	3.9%	3,805	3.2%
\$15,000 - \$24,999	2,658	2.3%	1,938	1.6%
\$25,000 - \$34,999	2,739	2.3%	2,116	1.8%
\$35,000 - \$49,999	5,141	4.4%	4,105	3.5%
\$50,000 - \$74,999	9,520	8.1%	7,988	6.7%
\$75,000 - \$99,999	11,680	10.0%	10,005	8.4%
\$100,000 - \$149,999	19,469	16.6%	19,227	16.2%
\$150,000 - \$199,999	18,230	15.5%	19,966	16.8%
\$200,000+	43,331	36.9%	49,459	41.7%

Median Household Income	\$156,087	\$171,452
Average Household Income	\$210,652	\$236,319
Per Capita Income	\$74,775	\$83,887

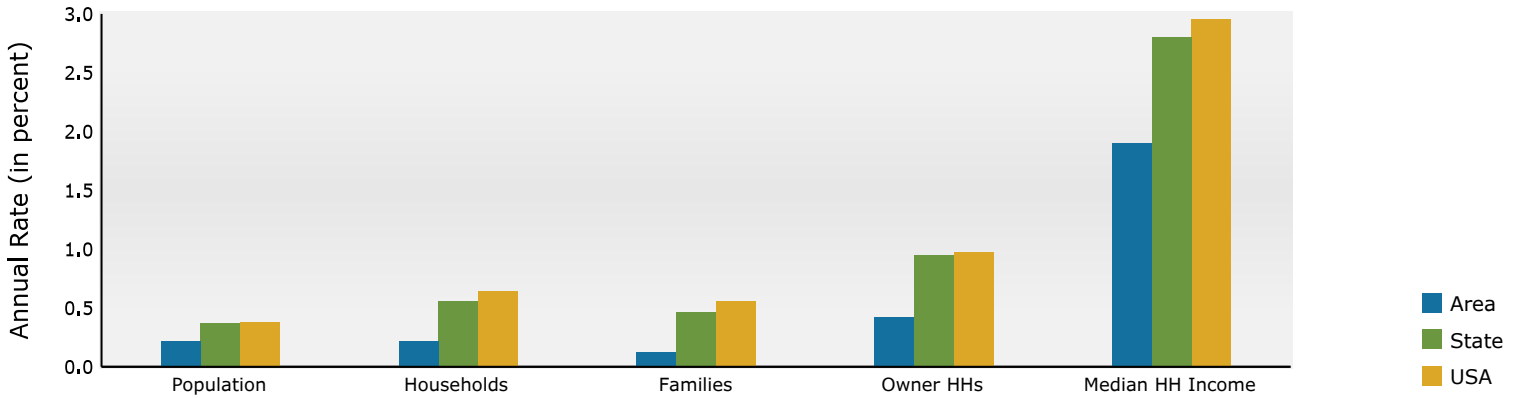
Population by Age	Census 2010		Census 2020		2024		2029	
	Number	Percent	Number	Percent	Number	Percent	Number	Percent
0 - 4	18,631	6.2%	18,435	5.6%	18,034	5.5%	17,206	5.2%
5 - 9	18,866	6.2%	20,283	6.2%	20,565	6.2%	18,910	5.7%
10 - 14	18,661	6.2%	21,125	6.4%	20,049	6.1%	21,496	6.5%
15 - 19	19,429	6.4%	22,113	6.7%	20,463	6.2%	20,758	6.2%
20 - 24	20,103	6.7%	22,133	6.7%	21,184	6.4%	19,275	5.8%
25 - 34	45,757	15.1%	47,829	14.6%	49,381	15.0%	46,929	14.1%
35 - 44	44,241	14.6%	47,067	14.3%	49,881	15.1%	48,899	14.7%
45 - 54	46,763	15.5%	43,811	13.4%	44,475	13.5%	47,001	14.1%
55 - 64	36,760	12.2%	39,721	12.1%	37,205	11.3%	37,524	11.3%
65 - 74	19,401	6.4%	27,163	8.3%	27,384	8.3%	29,858	9.0%
75 - 84	9,901	3.3%	13,548	4.1%	15,504	4.7%	18,770	5.6%
85+	3,684	1.2%	4,943	1.5%	5,385	1.6%	6,442	1.9%

Race and Ethnicity	Census 2010		Census 2020		2024		2029	
	Number	Percent	Number	Percent	Number	Percent	Number	Percent
White Alone	195,974	64.8%	168,093	51.2%	162,141	49.2%	155,908	46.8%
Black Alone	16,048	5.3%	19,479	5.9%	19,952	6.1%	20,118	6.0%
American Indian Alone	1,110	0.4%	1,719	0.5%	1,789	0.5%	1,827	0.5%
Asian Alone	59,607	19.7%	74,212	22.6%	77,261	23.4%	83,125	25.0%
Pacific Islander Alone	193	0.1%	188	0.1%	209	0.1%	211	0.1%
Some Other Race Alone	17,561	5.8%	27,201	8.3%	28,680	8.7%	30,216	9.1%
Two or More Races	11,704	3.9%	37,277	11.4%	39,477	12.0%	41,663	12.5%
Hispanic Origin (Any Race)	46,899	15.5%	55,734	17.0%	58,427	17.7%	61,545	18.5%

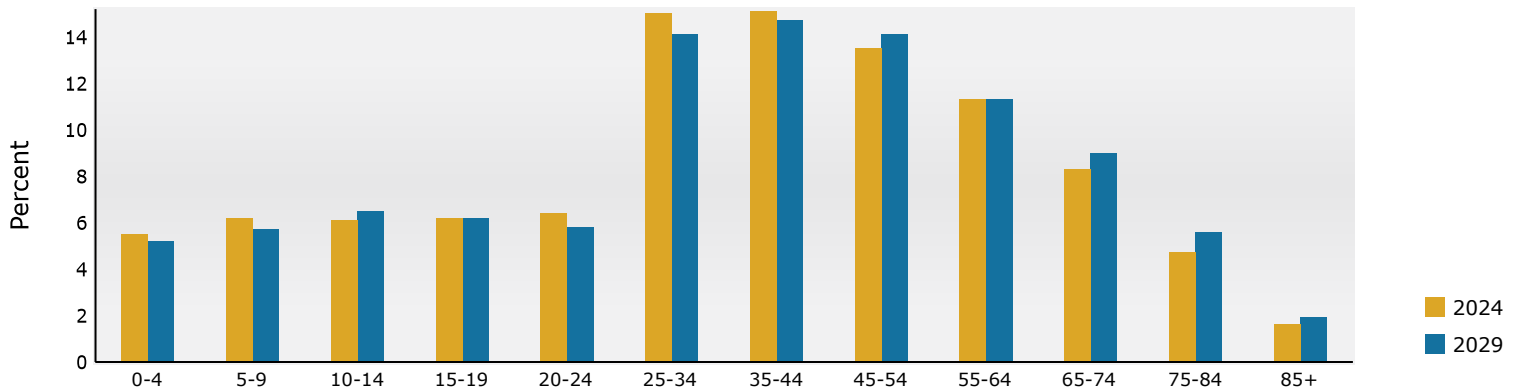
Data Note: Income is expressed in current dollars.

Source: Esri forecasts for 2024 and 2029. U.S. Census Bureau 2020 decennial Census in 2020 geographies.

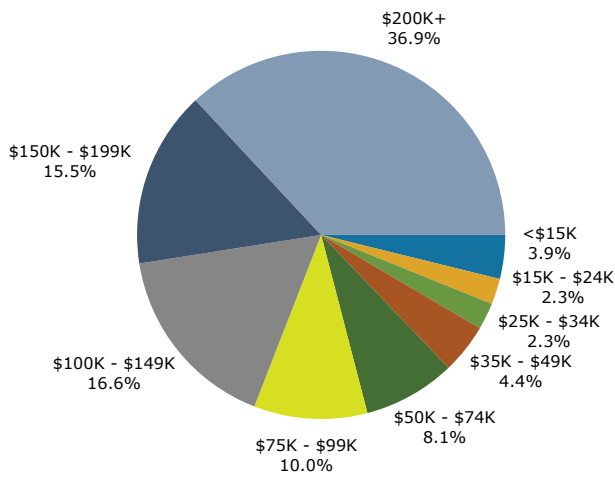
Trends 2024-2029



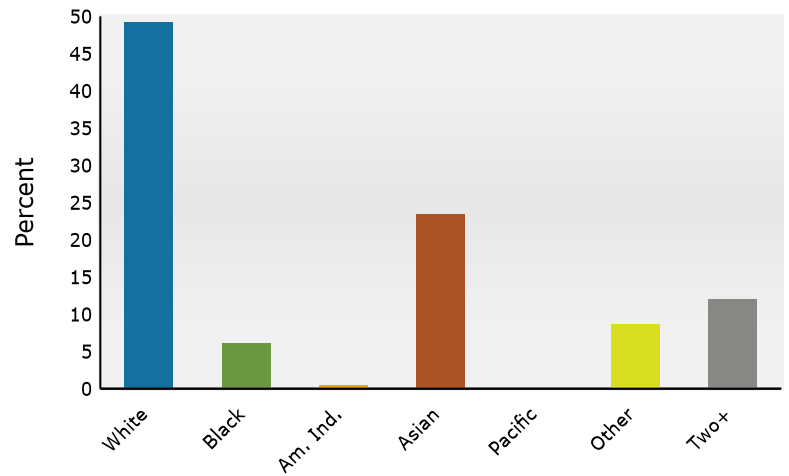
Population by Age



2024 Household Income



2024 Population by Race



2024 Percent Hispanic Origin: 17.7%

Source: Esri forecasts for 2024 and 2029. U.S. Census Bureau 2020 decennial Census in 2020 geographies.